



Supra MKIV Clutch Simulator kit

Parts list:

- 1x Clutch Position sensor with connector
- 1x Clutch Position sensor bracket
- 1x M6x1x12mm bolt
- 2x M5x0.8x25mm
- Clevis Pin 8x40mm + cutter pin
- 1x M8x1.25x35mm
- 1x CLUTCH SPRING (8HP-MKIV-CLUTCH-SPRING)
- 1x Clutch Spring holder
- 1x 8HP-MKIV Clutch Master Delete Plate

Clutch Position Sensor

The clutch position sensor only works in a certain range. It's possible to power it on 5v and mark the start and stop position for easier installation.

Clutch Position Sensor wiring

Pin #1 Yellow: 5v

Pin #4 Blue: 0-5v Signal

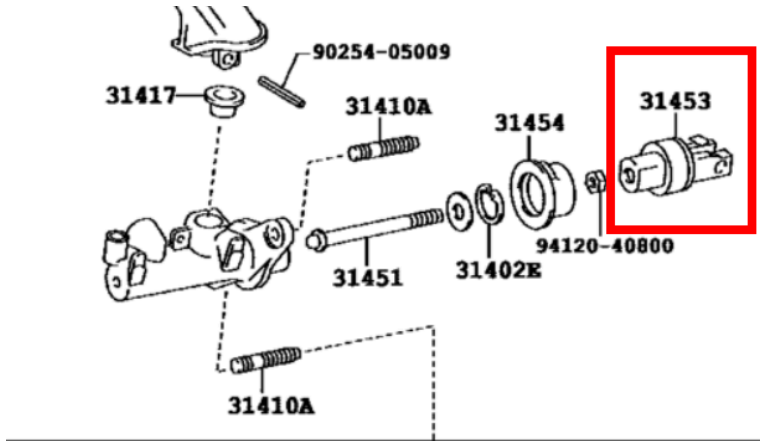
Pin #5 Red: Ground

Installation

First remove the clutch master cylinder.

The clutch simulator spring with bucket goes where the master was installed inside the cockpit.

Keep the 31453 part installed on the following diagram. This part goes into the clutch simulator spring.



The extended cutter pin goes replace the factory one

